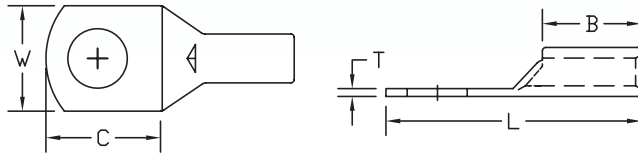


COPPER COMPRESSION LUGS

Standard Barrel - One Hole Rounded Tongue with Inspection Window Type BLY

- Manufactured from high conductivity seamless copper tubing
- Tin-plated to inhibit corrosion
- Beveled entry for easy cable insertion
- Inspection window to ensure full cable insertion
- Rounded tongue accommodates full washer clearance and adjustable lug orientation
- Connectors are suitable for voltages up to 35 KV



BLY DIMENSIONS & INSTALLATION TOOLING INFORMATION

CATALOG NUMBER	COPPER CONDUCTOR SIZE	STUD HOLE SIZE	FIGURE DIMENSIONS (IN.)					INSTALLATION TOOLING						WIRE STRIP LENGTH	
			TONGUE WIDTH "W"	TONGUE LENGTH "C"	TONGUE THICKNESS "T"	BARREL LENGTH "B"	OVERALL LENGTH "L"	MECHANICAL		HYDRAULIC		T&B			
								BURNDY	PENN-UNION DIELESS MECHANICAL TOOL	DIE INDEX	BURNDY Y35+ Y39	DIE CAT. NO.	DIE MS90485-		
BLY10-T7 • +	10 Str.	4-6	.32	.40	.08	.44	.96	Y8MRBI MR8G98	-	-	-	-	-	-	7/16"
BLY10-L36 • +	12 Sol.	8-#10	.31	.36	.08	.38	.80	Y10D Y14MV	-	-	-	-	-	-	7/16"
BLY8C-L14	8 Aircraft AN 8 8 AWG	8	.42	.47	.08	.37	1.15	Non-Ratchet: MY29-11	TDM-250XF	38	UV8L Nest Y34PLA Indenter (1) Crimp	11781M	-8	1/2"	
BLY8C-L		#10	.42	.47	.08	.37	1.15								
BLY8C-L1		1/4"	.42	.51	.08	.37	1.22								
BLY8C-L2		5/16"	.59	.71	.08	.50	1.30								
BLY8C-L3		3/8"	.59	.71	.08	.50	1.30								
BLY8C-L4		1/2"	.83	.88	.08	.50	1.55								
BLY6C-L1	6 Aircraft AN 6 6 AWG	#10	.47	.54	.08	.39	1.31	Non-Ratchet: MY29-11	TDM-250XF	39	UV6L Nest Y34PLA Indenter (1) Crimp	11782M	-6	1/2"	
BLY6C-L		1/4"	.47	.54	.08	.39	1.31								
BLY6C-L4		5/16"	.62	.67	.08	.45	1.44								
BLY6C-L2		3/8"	.62	.67	.08	.50	1.44								
BLY6C-L10		1/2"	.83	.88	.08	.50	1.68								
BLY4C-L3	4 Aircraft AN 4 4 AWG	#10	.63	.58	.10	.45	1.40	Non-Ratchet: MY29-11	TDM-250XF	40	UV4L Nest Y34PLA Indenter (1) Crimp	11783M	-4	1/2"	
BLY4C-L		1/4"	.63	.58	.10	.45	1.40								
BLY4C-L4		5/16"	.63	.66	.10	.50	1.49								
BLY4C-L2		3/8"	.65	.66	.10	.50	1.49								
BLY4C-L5		1/2"	.83	.88	.10	.50	1.72								
BLY2C-L3	2 Aircraft AN 2 2 AWG	#10	.71	.75	.11	.63	1.73	Non-Ratchet: MY29-11	TDM-250XF	41	UV2L Nest Y34PLA Indenter (1) Crimp	11784M	-2	5/8"	
BLY2C-L1		1/4"	.71	.75	.11	.63	1.73								
BLY2C-L2		5/16"	.71	.75	.11	.63	1.73								
BLY2C-L		3/8"	.71	.75	.11	.63	1.73								
BLY2C-L4		1/2"	.80	.90	.11	.63	1.90								

BLY DIMENSIONS & INSTALLATION TOOLING INFORMATION (CONTINUED)

CATALOG NUMBER	COPPER CONDUCTOR SIZE	STUD HOLE SIZE	FIGURE DIMENSIONS (IN.)					INSTALLATION TOOLING						WIRE STRIP LENGTH
			TONGUE WIDTH "W"	TONGUE LENGTH "C"	TONGUE THICKNESS "T"	BARREL LENGTH "B"	OVERALL LENGTH "L"	MECHANICAL		HYDRAULIC		T&B		
								BURNDY	PENN-UNION DIELESS MECHANICAL TOOL	DIE INDEX	BURNDY Y35+ Y39	DIE MS90485- DIE CAT. NO.	DIE MS90485-	
BLY1C-L6	1 Aircraft AN 1 1 AWG	#10	.77	.72	.13	.62	1.67	Non-Ratchet: MY29-11	TDM-250XF	42	UV1CL Nest Y34PLA Indentor (1) Crimp	11785M	-1	5/8"
BLY1C-L1		1/4"	.77	.83	.13	.62	1.85							
BLY1C-L2		5/16"	.77	.83	.13	.62	1.85							
BLY1C-L		3/8"	.77	.83	.13	.62	1.85							
BLY1C-L3		1/2"	.77	.95	.13	.62	1.98							
BLY1C-L4	7/16"	.77	.83	.13	.62	1.85								
BLY25-L1	1/0 Aircraft AN 1/0 1/0 AWG	1/4"	.85	.93	.13	.68	2.05	Non-Ratchet: MY29-11	TDM-250XF	43	UV25L Nest Y34PLA Indentor (1) Crimp	11786M	-01	11/16"
BLY25-L2		5/16"	.85	.93	.13	.68	2.05							
BLY25-L		3/8"	.85	.93	.13	.68	2.05							
BLY25-L3		1/2"	.85	1.01	.13	.68	2.09							
BLY25-L4		5/8"	.90	1.16	.13	.68	2.31							
BLY25-L6	7/16"	.85	.93	.13	.68	2.05								
BLY26-L1	2/0 Aircraft AN 2/0 2/0 AWG	1/4"	.94	1.05	.13	.81	2.32	Non-Ratchet: MY29-11	TDM-250XF	-	-	11787M	-02	13/16"
BLY26-L2		5/16"	.94	1.05	.13	.81	2.32							
BLY26-L		3/8"	.94	1.05	.13	.81	2.32							
BLY26-L3		1/2"	.94	1.05	.13	.81	2.32							
BLY26-L12		5/8"	.94	1.28	.13	.81	2.54							
BLY26-L4	7/16"	.94	1.05	.13	.81	2.32								
BLY27-L	3/0 Aircraft AN 3/0 3/0 AWG	3/8"	1.05	1.09	.14	.81	2.46	Non-Ratchet: MY29-11	TDM-250XF	-	-	11788M	-03	13/16"
BLY27-L1		1/2"	1.05	1.09	.14	.81	2.46							
BLY27-15		5/8"	1.05	1.28	.14	.81	2.63							
BLY27-L3 +		1/4"	1.05	1.09	.14	.81	2.46							
BLY27-L2		5/16"	1.05	1.09	.14	.81	2.46							
BLY27-6	7/16"	1.05	1.09	.14	.81	2.63								
BLY28-L	4/0 Aircraft AN 4/0 4/0 AWG	3/8"	1.15	1.28	.15	.87	2.76	Non-Ratchet: MY29-11	TDM-250XF	-	-	11789M	-04	7/8"
BLY28-L12		1/2"	1.15	1.28	.15	.87	2.76							
BLY28-L13		5/8"	1.15	1.28	.15	.87	2.76							
BLY28-L14		3/4"	1.27	1.44	.15	.87	2.96							
BLY28-L1 +		1/4"	1.15	1.28	.15	.87	2.76							
BLY28-L2		5/16"	1.15	1.28	.15	.87	2.76							
BLY28-L6		7/16"	1.15	1.28	.15	.87	2.76							
BLY28-L15		7/8"	1.27	1.44	.15	.87	2.96							

• Not UL listed

+ Not CSA certified